

Safety Shower & Eyewash Spare Parts



SE 910V

15mm Ball Valve Vertically fitted with Paddle Handle



SE 910H

15mm Ball Valve Horizontally fitted with Paddle Handle



SE 911

25mm Ball Valve w/ Horizontal Lever



G10-0041

Shroud Repair Kit



G10-0042

Complete Shroud Body Assembly



RPG05-1177

Aerator Repair Kit (6 Aerators & Key)



SE 850

Stainless Steel Showerhead w/ Integrated Flow Control



SE 810

Plastic Showerhead w/ Integrated Flow Control



G63-0049 MO

SE 400 Series Manifold

Safety Shower & Eyewash Spare Parts



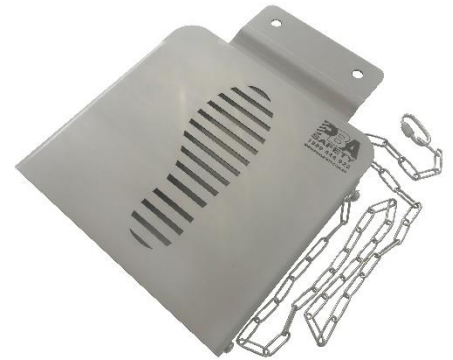
SE TAG

Weekly Test Tags
Packet of 10



SE AT TAG5

Aluminium Annual Test Tags
Packet of 5



SA 03001

Foot Treadle with
Universal Chain



G38-0415

Aerated Spray Head



G38-0416

Non-Aerated Spray Head



SA 03014

Stainless Steel Foot Pedal
Connection Chain



SA 01003

Stainless Steel Bull Horns
Assembly 10LPM



SA 01014

Stainless Steel Bull Horns
Assembly 20LPM



SR 06013

20Lt Aerator Screen
& Cap Assembly

Safety Shower & Eyewash Spare Parts



SA 01008

Dust Cap Assembly
(32mm DIA)



07-0104

Yellow Dust Cover Hinged



SC 02003

Replacement Shower Arm



SE 952

Eye Wash Test Gauge



G38-0012-RCP

Multi Spray Head



SA 02008

Tubular Pull Rod Assembly



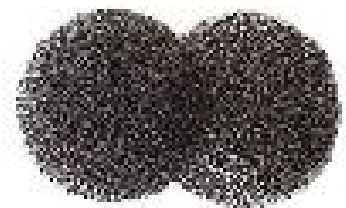
90-0146

Replacement Decal for
Push Handle



SR 69006

Replacement Decal for Pull
Rod Assembly



SE05-2200

Diffuser Pads for Non-Aerated
Spray Head (G38-0416)