



AUSTRALIAN MANUFACTURER AND DISTRIBUTOR

The Difference is the Experience.

EMERGENCY SAFETY SHOWER AND EYE WASH CATALOGUE



The Difference is the Experience

With over 60 years' experience PBA Safety is here to help you to make the correct decisions on how to manage, store and handle dangerous goods in your industry, and to offer solutions to your problems. Our own local manufacturing plant in Albury NSW and our vast expertise in the area of Australian standards and regulations, we can guarantee you unequalled service.



Laboratory Equipment, pg. 4 | Traditional Equipment, pg. 6 | Lifesaver Showers, pg. 13 |
Portable Equipment, pg. 15 | Cubicle Showers, pg. 19 | Alarms & Accessories, pg. 20 |
Signs & Test Kits, pg. 22 | Compliance Standards, pg. 23

EQUIPMENT BADGES

Look for these icons throughout this book to help identify product features.



Aerated Sprays: Item features aerated spray for a comfortable, soothing experience.



Non-Aerated Sprays: Item features soft yet full sprays for a comfortable experience.



AS 4775 - 2007 Certified: Indicates that the eye wash, face wash or emergency shower is certified to AS 4775 standards.



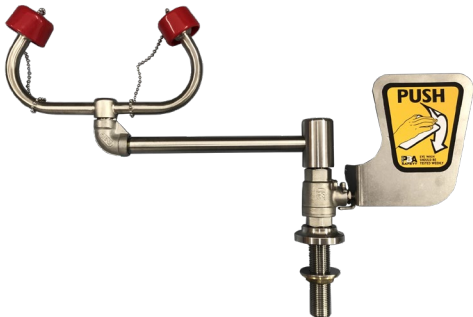
Scald & Freeze Protection Ready: Indicates that the product is compatible with our scald & freeze protection.

Laboratory Eye Wash Units

Bench Mounted Eye Wash SE572

Countertop mounted, push handle activated
Aerated Eye Wash with 90-degree swivel arm.

- Countertop-mounted
- Stainless steel push handle
- Stainless steel valve
- 15mm male inlet
- Integrated flow control
- Eye Wash: 12 LPM



Options	Description
LHS	Left hand operated

Swing Down Eye Wash

Wall or Bench mounted, pull down activated Aerated Eye Wash with comfortable, soft sprays.

- Wall or bench mounted
- Stainless steel valve
- 15mm female inlet
- Integrated flow controls
- Eye Wash: 12 LPM



Product	Description
SE577SD	Wall Mounted Swing Down Eye Wash
SE573SD	Bench Mounted Swing Down Eye Wash

Countertop Mounted Eye Wash & Drench Hose SE927

Featuring a countertop-mounted design, this Eye Wash and Body Drench Hose is perfect for flushing any affected area in the event of chemical exposure. The included 1.8M long hose is concealed below the counter.

- Dual aerated spray head
- Countertop mounted
- Stay open valve
- 1.8M long hose
- Integrated flow controls
- Eye Wash: 12 LPM



Options	Description
VB	Vacuum breaker

Laboratory Eye Wash Units

Wall Mounted Eye Wash & Drench Hose

The SE925TEW Aerated Eye Wash & Body Drench Hose features a wall-mounted installation attached to an extended bracket for simple and secure accessibility. Available in a dual or single spray head option. Includes a 3.6M recoiling hose for flexibility.

- Dual aerated spray head
- Wall mounted
- 3.6M long recoiling hose
- Integrated flow control
- Eye Wash: 12 LPM

Product	Description
SE925	Single spray head drench hose only
SE925 TEW	Dual spray head Eye Wash
Options	Description
VB	Vacuum breaker



Wall Mounted Drench Hose SE920

The Body Drench Hose features a wall-mounted installation and a single aerated spray head for eye, face or body flushing. Includes a 1.8M reinforced hose for flexibility.

- Single spray head
- Wall mounted
- 1.8M long hose
- Integrated flow control
- Drench Hose: 6 LPM

Options	Description
VB	Vacuum breaker



Countertop Mounted Drench Hose SE921

Featuring a countertop mounted design, this Body Drench Hose can be installed in intuitive locations that are easily accessible. The included 1.8M foot long hose is concealed below the counter.

- Single spray head
- Countertop mounted
- 1.8M long hose
- Integrated flow control
- Drench Hose: 6 LPM

Options	Description
VB	Vacuum breaker



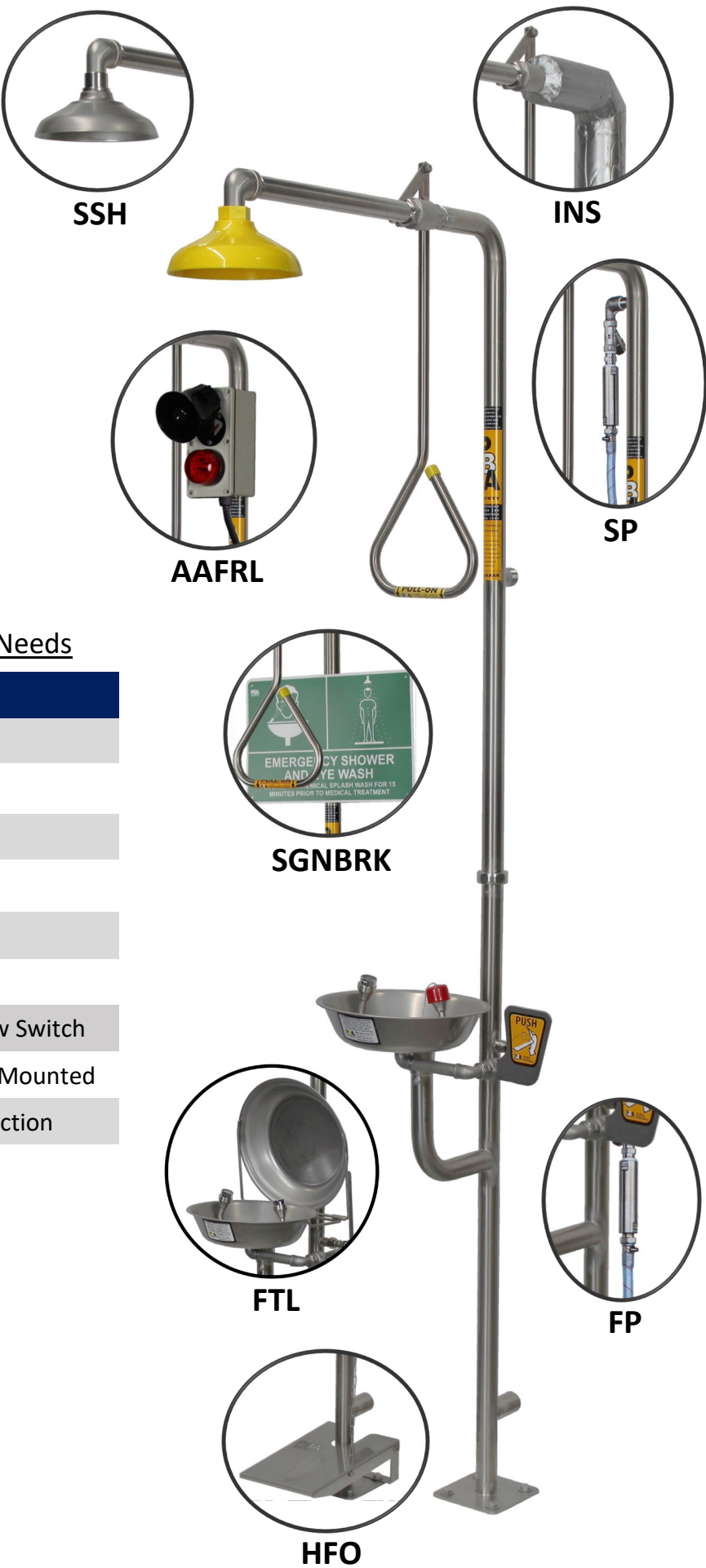
Traditional Equipment

The Perfect Combination

Safety should never be compromised. But sometimes it does because selecting the perfect emergency equipment can become such a complicated experience. But not anymore. Our Traditional Combination Stations pair every item necessary to create a complete safety solution. Featuring our signature eyewashes merged with our powerful Lifesaver Shower Head - these fixtures take the guesswork out of selecting compliant equipment.

Additional Add-Ons to Fit All Your Needs

Options	Description
HFO	Hand and foot operated
SP	Scald protection valve
FP	Freeze protection valve
INS	Fitted Insulation Jacket
FTL	Self-Closing Flip Top Lid
SSH	Stainless steel showerhead
AAFRL	Red Light and Siren w/ Flow Switch
SGNBRK	Emergency Eye Wash Sign Mounted
316SS	316 Stainless Steel Construction



Traditional Eye/Face Wash Units

Wall Mounted Eye/Face Wash

Wall mounted Aerated Eye / Face Wash with two, highly visible shroud heads. Featuring a corrosion resistant stainless steel bowl.

- Wall mounted
- Integrated volume controls
- Stainless steel valve
- Eye Wash: 36 LPM
- Stainless steel push handle



Product	Description
SE400	Aerated Eye/Face Wash

Options	Description
HFO	Hand and foot operation
SP	Scald Protection Valve
FP	Freeze Protection Valve
ILS	In Line Strainer



Pedestal Mounted Eye/Face Wash

Pedestal mounted Aerated Eye / Face Wash with two, highly visible shroud heads. Featuring corrosion resistant stainless steel bowl.

- Pedestal mounted
- Integrated volume controls
- Stainless steel valve
- Eye Wash: 36 LPM
- Stainless steel push handle



Product	Description
SE420	Aerated Eye/Face Wash

Options	Description
HFO	Hand and foot operation
SP	Scald Protection Valve
FP	Freeze Protection Valve
ILS	In Line Strainer



Traditional Eye/Face Wash Units

Wall Mounted Eye/Face Wash

Wall mounted Non-Aerated Eye / Face Wash with two, highly visible spray heads. Featuring a corrosion resistant stainless steel bowl.

- Wall mounted
- Stainless steel valve
- Stainless steel push handle
- Integrated flow controls
- Eye Wash: 16 LPM



Product	Description
PEM490	Non-Aerated Eye/Face Wash

Options	Description
HFO	Hand and foot operation
SP	Scald Protection Valve
FP	Freeze Protection Valve
ILS	In Line Strainer
FTL	Self-Closing Flip Top Lid



Pedestal Mounted Eye/Face Wash

Pedestal mounted Non-Aerated Eye / Face Wash with two, highly visible spray heads. Featuring a corrosion-resistant stainless steel bowl.

- Pedestal mounted
- Stainless steel valve
- Stainless steel push handle
- Integrated flow controls
- Eye Wash: 16 LPM



Product	Description
PEM491	Non-Aerated Eye/Face Wash

Options	Description
HFO	Hand and foot operation
SP	Scald Protection Valve
FP	Freeze Protection Valve
ILS	In Line Strainer
FTL	Self-Closing Flip Top Lid



Traditional Eye/Face Wash Units

Wall Mounted Eye/Face Wash

Wall mounted Aerated Eye / Face Wash with stainless steel bullhorns. Featuring a corrosion resistant stainless steel bowl.

- Wall mounted
- Stainless steel valve
- Stainless steel push handle
- Integrated flow control
- Eye Wash: 22 LPM

Product	Description
SE582 20L	Aerated Eye/Face Wash

Options	Description
HFO	Hand and foot operation
SP	Scald Protection Valve
FP	Freeze Protection Valve
ILS	In Line Strainer
FTL	Self-Closing Flip Top Lid



Pedestal Mounted Eye/Face Wash

Pedestal mounted Aerated Eye / Face Wash with stainless steel bullhorns. Featuring a corrosion resistant stainless steel bowl.

- Pedestal mounted
- Stainless steel valve
- Stainless steel push handle
- Integrated flow control
- Eye Wash: 22 LPM

Product	Description
SE584 20L	Aerated Eye/Face Wash

Options	Description
HFO	Hand and foot operation
SP	Scald Protection Valve
FP	Freeze Protection Valve
ILS	In Line Strainer
FTL	Self-Closing Flip Top Lid



Traditional Eye Wash Units

Wall Mounted Eye Wash

Wall mounted Aerated Eye Wash with stainless steel bullhorns.
Featuring a corrosion resistant stainless steel bowl.

- Wall mounted
- Integrated flow control
- Stainless steel valve
- Eye Wash: 12 LPM
- Stainless steel push handle

Product	Description
SE582	Aerated Eye Wash

Options	Description
HFO	Hand and foot operation
SP	Scald Protection Valve
FP	Freeze Protection Valve
ILS	In Line Strainer
FTL	Self-Closing Flip Top Lid



Pedestal Mounted Eye Wash

Pedestal mounted Aerated Eye Wash with stainless steel bullhorns. Featuring a corrosion-resistant stainless steel bowl.

- Pedestal mounted
- Integrated flow control
- Stainless steel valve
- Eye Wash: 12 LPM
- Stainless steel push handle

Product	Description
SE584	Aerated Eye Wash

Options	Description
HFO	Hand and foot operation
SP	Scald Protection Valve
FP	Freeze Protection Valve
ILS	In Line Strainer
FTL	Self-Closing Flip Top Lid



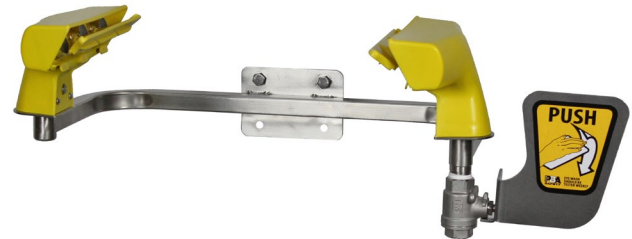
Traditional Eye Wash Units

Wall Mounted Eye / Face Wash

- Wall mounted
- Stainless steel valve
- Stainless steel push handle
- Integrated volume controls
- Eye/Face Wash: 36 LPM

Product	Description
SE475	Aerated Eye/Face Wash

Options	Description
SP	Scald Protection Valve
FP	Freeze Protection Valve
ILS	In Line Strainer



Wall Mounted Eye / Face Wash

- Wall mounted
- Stainless steel valve
- Stainless steel push handle
- Integrated flow control
- Eye Wash: 16 LPM

Product	Description
PEM575	Non-Aerated Eye/Face Wash

Options	Description
SP	Scald Protection Valve
FP	Freeze Protection Valve
ILS	In Line Strainer



Wall Mounted Eye Wash

- Wall mounted
- Stainless steel valve
- Stainless steel push handle
- Integrated flow control
- Eye Wash: 12 LPM

Product	Description
PEM575	Aerated Eye Wash

Options	Description
SP	Scald Protection Valve
FP	Freeze Protection Valve
ILS	In Line Strainer



Combination Deluge Shower Units

Combination Deluge Shower with Aerated Eye/Face Wash

- High-performance shower head
- Pull-rod activated shower
- 304 Stainless Steel Stanchion
- Integrated volume controls
- Eye/Face Wash: 36 LPM
- Shower: 78 LPM

Product	Description
SE603	Shower & Aerated Eye/Face Wash

Options	Description
HFO	Hand and foot operated
SP	Scald protection valve
FP	Freeze protection valve
INS	Fitted Insulation Jacket
SSH	Stainless steel showerhead
AAFRL	Red Light and Siren w/ Flow Switch
SGNBRK	Emergency Shower & Eye Wash Sign Mounted



STANDARDS
Australia



Combination Deluge Shower with Aerated Eye/Face Wash

- High-performance shower head
- Pull-rod activated shower
- 304 Stainless Steel Stanchion
- Integrated flow controls
- Eye/Face Wash: 22 LPM
- Shower: 78 LPM

Product	Description
SE693 20L	Shower & Aerated Eye Face Wash

Options	Description
HFO	Hand and foot operated
SP	Scald protection valve
FP	Freeze protection valve
INS	Fitted Insulation Jacket
FTL	Self-Closing Flip Top Lid
SSH	Stainless steel showerhead
AAFRL	Red Light and Siren w/ Flow Switch
SGNBRK	Emergency Shower & Eye Wash Sign Mounted
316SS	316 Stainless Steel Construction



STANDARDS
Australia



Combination Deluge Shower Units

Combination Deluge Shower with Non-Aerated Eye/Face Wash

- High-performance shower head
- Pull-rod activated shower
- 304 Stainless Steel Stanchion
- Integrated flow controls
- Eye/Face Wash: 16 LPM
- Shower: 78 LPM

Product Description

PEM603 Shower & Non-Aerated Eye/Face Wash

Options Description

HFO Hand and foot operated

SP Scald protection valve

FP Freeze protection valve

INS Fitted Insulation Jacket

FTL Self-Closing Flip Top Lid

SSH Stainless steel showerhead

AAFRL Red Light and Siren w/ Flow Switch

SGNBRK Emergency Shower & Eye Wash Sign Mounted

316SS 316 Stainless Steel Construction



Combination Deluge Shower with Aerated Eye Wash

- High-performance shower head
- Pull-rod activated shower
- 304 Stainless Steel Stanchion
- Integrated flow controls
- Eye Wash: 12 LPM
- Shower: 78 LPM

Product Description

SE693 Shower & Aerated Eye Wash

Options Description

HFO Hand and foot operated

SP Scald protection valve

FP Freeze protection valve

INS Fitted Insulation Jacket

FTL Self-Closing Flip Top Lid

SSH Stainless steel showerhead

AAFRL Red Light and Siren w/ Flow Switch

SGNBRK Emergency Shower & Eye Wash Sign Mounted

316SS 316 Stainless Steel Construction



Combination Deluge Shower Units

Combination Deluge Shower with Aerated Eye/Face Wash

- High-performance shower head
- Pull-rod activated shower
- 304 Stainless Steel Stanchion
- Integrated volume controls
- Eye/Face Wash: 36 LPM
- Shower: 78 LPM

Product Description

Product	Description
SE685	Shower & Aerated Eye/Face Wash

Options Description

Options	Description
HFO	Hand and foot operated
SP	Scald protection valve
FP	Freeze protection valve
INS	Fitted Insulation Jacket
SSH	Stainless steel showerhead
AAFRL	Red Light and Siren w/ Flow Switch
SGNBRK	Emergency Shower & Eye Wash Sign Mounted



STANDARDS
Australia



Combination Deluge Shower with Aerated Eye/Face Wash

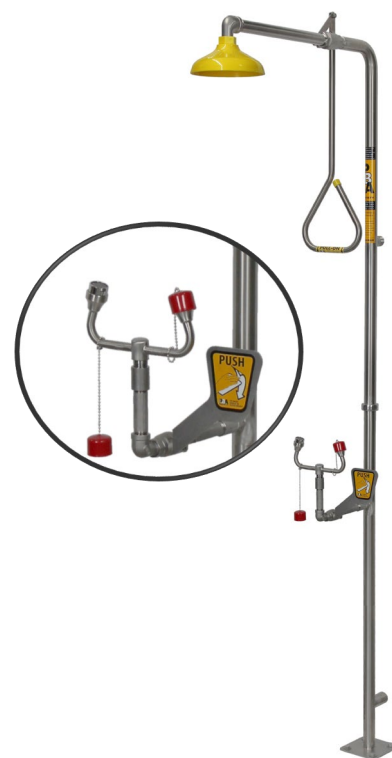
- High-performance shower head
- Pull-rod activated shower
- 304 Stainless Steel Stanchion
- Integrated flow controls
- Eye/Face Wash: 22 LPM
- Shower: 78 LPM

Product Description

Product	Description
SE675 20L	Shower & Aerated Eye Face Wash

Options Description

Options	Description
HFO	Hand and foot operated
SP	Scald protection valve
FP	Freeze protection valve
INS	Fitted Insulation Jacket
SSH	Stainless steel showerhead
AAFRL	Red Light and Siren w/ Flow Switch
SGNBRK	Emergency Shower & Eye Wash Sign Mounted
316SS	316 Stainless Steel Construction



STANDARDS
Australia



Combination Deluge Shower Units

Combination Deluge Shower with Non-Aerated Eye/Face Wash

- High-performance shower head
- Pull-rod activated shower
- 304 Stainless Steel Stanchion
- Integrated flow controls
- Eye/Face Wash: 16 LPM
- Shower: 78 LPM

Product Description

Product PEM603 **Description** Shower & Non-Aerated Eye/Face Wash

Options Description

Options HFO **Description** Hand and foot operated

SP Scald protection valve

FP Freeze protection valve

INS Fitted Insulation Jacket

SSH Stainless steel showerhead

AAFRL Red Light and Siren w/ Flow Switch

SGNBRK Emergency Shower & Eye Wash Sign Mounted

316SS 316 Stainless Steel Construction



Combination Deluge Shower with Aerated Eye Wash

- High-performance shower head
- Pull-rod activated shower
- 304 Stainless Steel Stanchion
- Integrated flow controls
- Eye Wash: 12 LPM
- Shower: 78 LPM

Product Description

Product SE693 **Description** Shower & Aerated Eye Wash

Options Description

Options HFO **Description** Hand and foot operated

SP Scald protection valve

FP Freeze protection valve

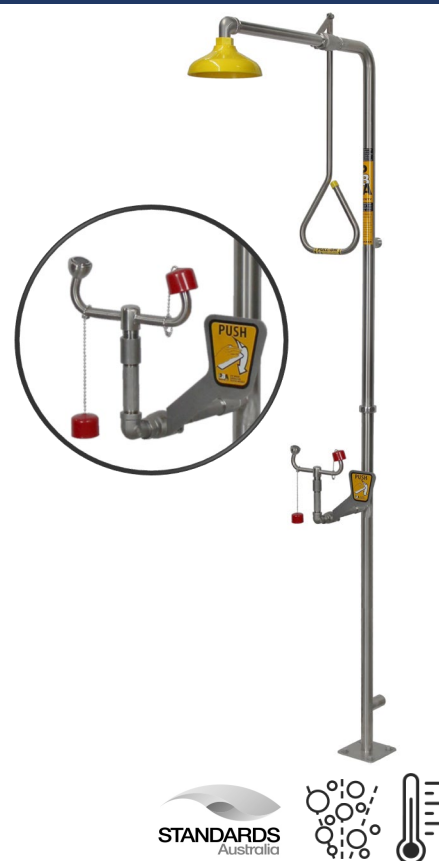
INS Fitted Insulation Jacket

SSH Stainless steel showerhead

AAFRL Red Light and Siren w/ Flow Switch

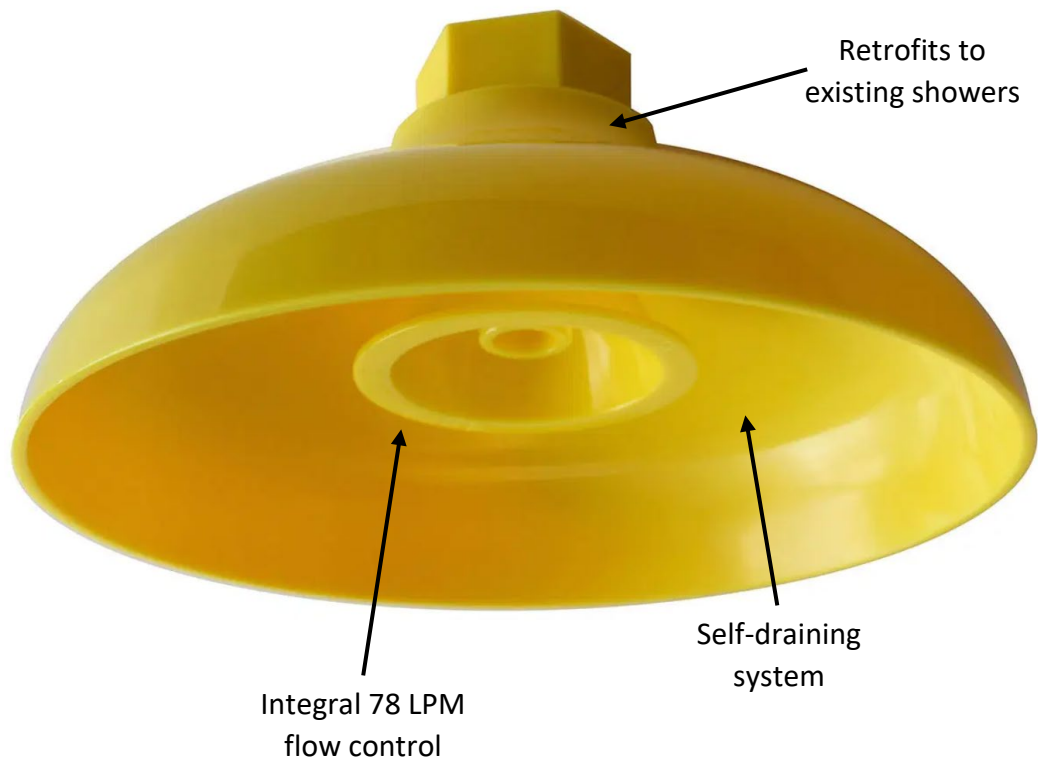
SGNBRK Emergency Shower & Eye Wash Sign Mounted

316SS 316 Stainless Steel Construction



A Superior Shower Inside & Out

Lifesaver elevates emergency shower heads to an entirely new level. In addition to a robust, comfortable spray performance – we developed a self-draining system that ensures water will never collect and freeze. We engineered a 78 LPM flow control that perfectly balances pressure between the shower and the eyewash. And Lifesaver is even able to retrofit any existing emergency shower system, making it exceptionally versatile.



Lifesaver Deluge Showers

Horizontal Shower

Wall mounted, high-performing emergency deluge shower featuring a highly visible yellow plastic constructed shower head. Manufactured with a stay-open S/Steel ball valve to allow hands-free operation when activated.

- Wall mounted
- Stainless steel valve
- Stainless steel pull rod
- Integrated flow control
- Shower: 78 LPM



Product	Description
SE227	Wall Mounted Deluge Shower

Options	Description
SSH	Stainless Steel Showerhead
WALLBRK	Wall Mounting Bracket

Vertical Shower

Wall mounted, high-performing emergency deluge shower featuring a highly visible yellow plastic constructed shower head. Manufactured with a stay-open S/Steel ball valve to allow hands-free operation when activated.

- Ceiling mounted
- Stainless steel valve
- Stainless steel pull rod
- Integrated flow control
- Shower: 78 LPM



Product	Description
SE220	Ceiling Mounted Deluge Shower

Options	Description
SSH	Stainless Steel Showerhead

Lifesaver Deluge Showers

Free Standing Shower

- High-performance shower head
- Pull-rod activated shower
- 304 Stainless Steel Stanchion
- Integrated flow control
- Shower: 78 LPM

Product	Description
SE253	Free Standing Deluge Shower

Options	Description
SP	Scald protection valve
INS	Fitted Insulation Jacket
SSH	Stainless steel showerhead
AAFRL	Red Light and Siren w/ Flow Switch
SGNBRK	Emergency Shower Sign Mounted



Platform Operated Shower

- High-performance shower head
- Platform activated shower
- 304 Stainless Steel Stanchion
- Integrated flow control
- Shower: 78 LPM

Product	Description
SE253PO	Platform Operated Deluge Shower

Options	Description
SP	Scald protection valve
INS	Fitted Insulation Jacket
SSH	Stainless steel showerhead
AAFRL	Red Light and Siren w/ Flow Switch
SGNBRK	Emergency Shower Sign Mounted



Portable Equipment

Conquer The Unpredictable

Every worksite is different. Regardless of if it's a construction site or golf course, the potential for chemical exposure is real. And an accident can happen in the blink of an eye.

For facilities that lack a reliable, convenient water source - it's vital to install equipment that functions independently from plumbing. Our portable eyewashes have been designed to be placed practically anywhere on your worksite.

Every item featured in this section has been engineered to deliver comforting yet powerful sprays to any affected area.



Portable Eye Wash Units

Gravityflo® Portable Eye Wash w/ Drench Hose

Features a 76L capacity tank with a pull strap activation to provide hands free operation for 15 continuous minutes. Includes a side fitting drench hose that provides additional protection and can be used for spot body flushing. Eye Wash can be shelf or wall mounted.

- Easily refillable
- Tamper resistant fill cap
- Pull strap activation
- Flexible drench hose

Product	Description
SE4300	Portable Eye Wash with Drench Hose

Options	Description
SE4360CS	Cart for transportation with fluid collection bucket



Gravityflo® Portable Eye Wash

Features a 79L capacity tank and a drop down activation to provide hands free operation for 15 continuous minutes. Spray arms and valve are constructed of solid brass to provide exceptional durability.

- Easily refillable
- Pull down activation
- Tamper resistant fill cap

Product	Description
SE4000	Portable 79L Eye Wash

Options	Description
SE4260CS	Cart for transportation with fluid collection bucket
SE4000CVR	Insulation Cover to Suit SE4000
SE4920	Drench hose for Gravityflo Units



Portable Eye Wash Units

Gravityflo® Portable Eye Wash

Features a 34L capacity tank and a drop down activation to provide hands free operation for 15 continuous minutes. Eye Wash can be wall, table or shelf mounted.

- Easily refillable
- Tamper resistant fill cap
- Pull down activation
- Wall bracket included



Product	Description
SE4400	Portable 34L Eye Wash

Options	Description
SE4400CS	Cart for transportation with fluid collection bucket
SE4400CVR	Insulation Cover to Suit SE4400

Gravity Flow Portable Eye Wash

Features a 45L capacity tank and a drop-down activation to provide hands free operation for 15 continuous minutes.

- Easily refillable
- Pull down activation
- Drain point under unit



Product	Description
SE4045	Portable 45L Eye Wash

Pressurized Body Wash

Portable Body Wash features multi spray hose supplied by a 9L capacity tank that delivers water for 3 continuous minutes.

- Easily refillable
- Squeeze Handle activation
- Wall bracket included



Product	Description
SE509	Pressurized Body Wash

Options	Description
SE509CVR	Insulation Cover to Suit SE509

Portable Eye Wash Units

Pressurized Eye Wash & Body Wash

Portable Eye Wash features Non-Aerated bull horns and Multi Spray Body Wash supplied by a 106 Lt capacity stainless steel tank that delivers water for 15 continuous minutes to the Eye Wash only.

- Stainless steel tank
- Easily refillable
- Drain point at base
- 106 Litre Capacity

Product	Description
SE590A-106-675	Pressurized Eye Wash & Body Wash

Options	Description
SE590A-106HT	Hand trolley to suit SE590A-106
SE590A-106CVR	Insulation Cover to suit SE590A-106



Pressurized Combination Eye Wash / Drench Hose

Portable Eye Wash features combination Non-Aerated Eye Wash / Drench Hose supplied by a 45 Lt capacity stainless steel tank that delivers water for 15 continuous minutes.

- Stainless steel tank
- Easily refillable
- 45 Litre Capacity

Product	Description
SE590A-45	Pressurized Eye Wash / Drench Hose

Options	Description
SE594	Hand trolley to suit SE590A-45
SE590A-45CVR	Insulation Cover to Suit SE590A-45



Multi Spray & Platform Units

Combination Multi Spray Shower & Eye/Face Wash

- Free standing Frame
- Platform activated shower
- 304 Stainless Steel Stanchion
- Integrated volume controls
- Eye/Face Wash: 36 LPM
- Shower: 240 LPM

Product	Description
SE663PO	Mult Spray Shower & Eye/Face Wash
Options	Description
3P	3 Panel Design



Combination Deluge Shower with Eye/Face Wash

- High-performance shower head
- Pull-rod activated shower
- 304 Stainless Steel Stanchion
- Water Catchment Basin
- Integrated volume controls
- Eye/Face Wash: 36 LPM
- Shower: 78 LPM

Product	Description
SE607 3P WCB	Cubicle Shower & Eye/Face Wash
Options	Description
WR	Complete with Slanted Roof
Curtain	Modesty Curtain to Suit SE607 3P
SP	Scald protection valve
FP	Freeze protection valve
INS	Fitted Insulation Jacket
SSH	Stainless steel showerhead
AAFRL	Red Light and Siren w/ Flow Switch



Multi Spray & Platform Units

Platform Deluge Shower with Eye/Face Wash

- High-performance shower head
- Pull-rod activated shower
- Platform operated Eye/Face Wash
- 304 Stainless Steel Stanchion
- Integrated volume controls
- Eye/Face Wash: 36 LPM
- Shower: 78 LPM

Product	Description
---------	-------------

SE106	Platform Shower & Eye/Face Wash
-------	---------------------------------

Options	Description
---------	-------------

SP	Scald protection valve
----	------------------------

FP	Freeze protection valve
----	-------------------------

INS	Fitted Insulation Jacket
-----	--------------------------

SSH	Stainless steel showerhead
-----	----------------------------

AAFRL	Red Light and Siren w/ Flow Switch
-------	------------------------------------

SGNBRK	Emergency Shower & Eye Wash Sign Mounted
--------	--



Platform Deluge Shower with Eye Wash

- High-performance shower head
- Pull-rod activated shower
- Platform operated Eye Wash
- 304 Stainless Steel Stanchion
- Integrated flow controls
- Eye Wash: 12 LPM
- Shower: 78 LPM

Product	Description
---------	-------------

SE105	Platform Shower & Eye Wash
-------	----------------------------

Options	Description
---------	-------------

SP	Scald protection valve
----	------------------------

FP	Freeze protection valve
----	-------------------------

INS	Fitted Insulation Jacket
-----	--------------------------

FTL	Self-Closing Flip Top Lid
-----	---------------------------

SSH	Stainless steel showerhead
-----	----------------------------

AAFRL	Red Light and Siren w/ Flow Switch
-------	------------------------------------

SGNBRK	Emergency Shower & Eye Wash Sign Mounted
--------	--

316SS	316 Stainless Steel Construction
-------	----------------------------------



Alarms & Accessories

Alarm System w/ Flow Switch

Alarm system features an electronic siren and flashing light. Alarm instantly activates when water flows through emergency equipment.

- Easily fitted
- Activated by flow switch
- Shower mounting bracket included

Product	Description
SE AAFRL	Audible Visual Alarm
SE FS	Flow Switch Only



Alarm System w/ Flow & Pressure Switches

Alarm system features an electronic siren and flashing lights. Alarm instantly activates when water flows through emergency equipment or water pressure to unit drops.

- Easily fitted
- Activated by flow & pressure switches
- Shower mounting bracket included

Product	Description
SE DAVAF	Audible Visual Alarm
SE FS	Flow Switch Only
SE PS	Pressure Switch Only



Green LED Visibility Light & Mounting Pole

Green LED Visibility Non-Hazardous Light with optional mounting pole & battery backup.

- Easily fitted
- Mounting brackets included

Product	Description
SE VLNH	Green LED Light & Mounting Pole
SE GLNH	Green LED Light Only

Options	Description
BB	Battery Backup Model Light

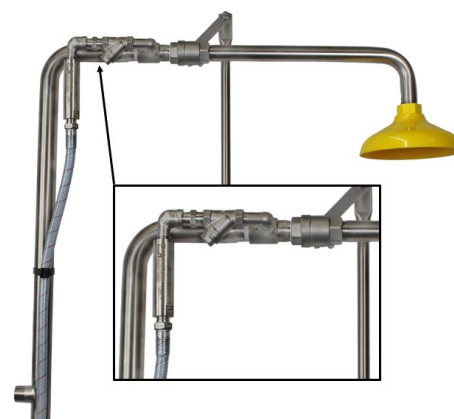


Alarms & Accessories

Thermal Relief Anti Scald Valve & Strainer Retro Kit

Top Mount Anti Scald Valve Retro Kit is fitted behind the 25mm ball valve as shown in the image.

- Easily fitted
- Scald valve included
- All fittings supplied



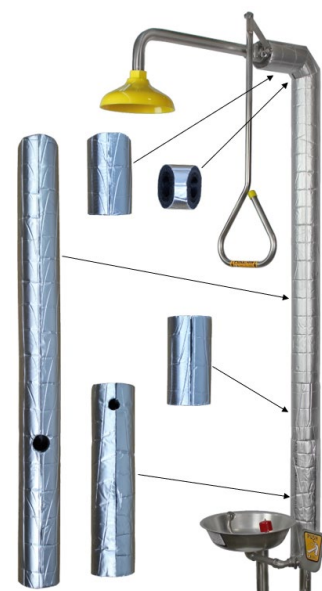
Product	Description
SE1/2HAT/SP105TMRetro	Retro Fit Scald Valve Kit
SEHAT/SP105	Anti Scald Valve Only

Safety Shower Insulation Jacket Kit

Our Safety Shower Insulation Kit comes pre-Slit & cut for fast fitting to our Range of Safety Showers. (Some Trimming may be required)

- Easily fitted

Product	Description
SE INS-THERMO FOIL KIT	Insulation Jacket Kit
SE THERMOFOIL 2MT	2 Metre Length of Insulation



Modesty Curtain

This curtain provides privacy when removing contaminated clothing in the event of a chemical burn.

- Easily fitted
- Mounting brackets included

Product	Description
SE600C	Modesty Curtain & Mounting Ring
SA06002	Modesty Curtain Only



Signs & Test Kits

Emergency Signs

Each of our emergency signs have been designed to easily indicate your given emergency equipment. Our signs are easy to install and are available in polyethylene or metal.

Product	Description
SESGN01	Shower Sign 600 x 450 Poly
SESGN01M	Shower Sign 600 x 450 Metal
SESGN02	Shower Sign 300 x 225 Poly
SESGN02M	Shower Sign 300 x 225 Metal
SESGN03	Shower/Eyewash Sign 600 x 450 Poly
SESGN03M	Shower/Eyewash Sign 600 x 450 Metal
SESGN04	Shower/Eyewash Sign 450 x 300 Poly
SESGN04M	Shower/Eyewash Sign 450 x 300 Metal
SESGN05	Eyewash Sign 600 x 450 Poly
SESGN05M	Eyewash Sign 600 x 450 Metal
SESGN06	Eyewash Sign 300 x 225 Poly
SESGN06M	Eyewash Sign 300 x 225 Metal
SESGNBRK	Bracket for Mounting of Sign to Shower



Test Kits

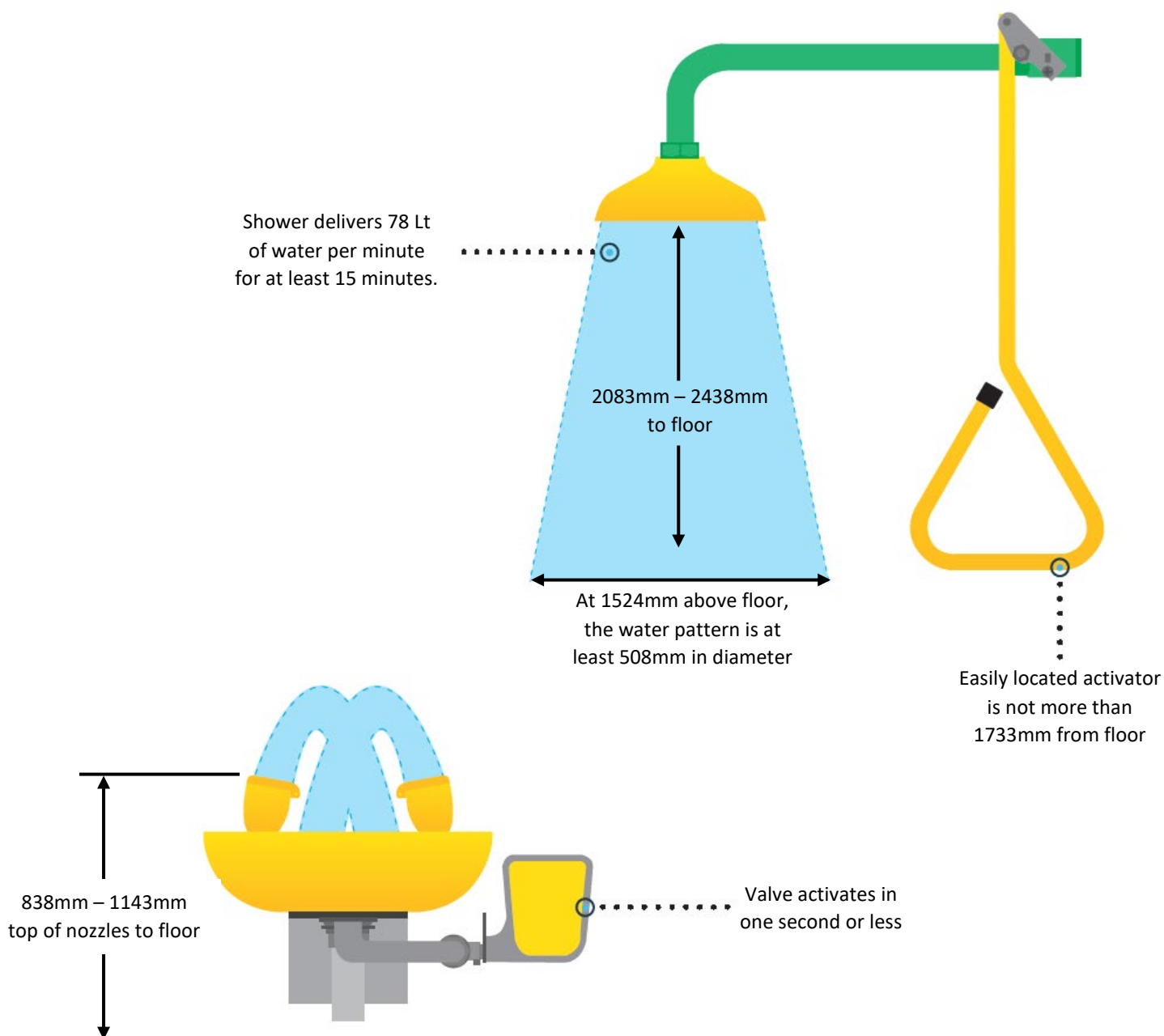
Our test kits exist to allow routine testing of your emergency equipment. The SE 950 includes a testing sock, eyewash testing gauge and graduated bucket. The SE SHW includes a 120L bin, testing sock, eyewash testing gauge, shower pattern tester, test tags, compliance checklist & graduated buckets.

Product	Description
SE 950	Testing Kit
SE SHW	120L Testing Kit



The Anatomy of a Spray

The idea behind our equipment has never wavered – to engineer products that perform flawlessly. But to achieve that, we not only need to live up to our own performance standards but comply with AS 4775 as well. Which is why every eye wash or shower we design undergoes extensive testing to deliver the most relieving experience possible. From the strength and comfort of every spray to the specific radius of water coverage, we believe it's our attention to detail that sets us apart from others.



Compliance Standards



10 SECONDS TRAVEL TIME FROM A HAZARD

AS 4775 requires that companies provide emergency showers and eye washes within 10 seconds travel time of a hazard. Look for signage indicating hazardous material use and make sure eye washes and showers are within the prescribed distance.



HAZARDOUS MATERIAL STORAGE

The storage, transfer and use of flammable liquids require showers and eye washes as secondary protection. Look for containers used to handle or store these materials and make sure AS 4775 compliant emergency equipment is within 10 seconds travel distance.



PERSONAL PROTECTIVE EQUIPMENT

Look for areas where workers are using personal protective equipment such as goggles and liquid proof gloves. These are found in areas where hazardous materials are being used, and eye washes and showers will be required as secondary protection within 10 seconds travel distance.



BATTERY CHARGING & MAINTENANCE

AS 4775 provides guidelines regarding eye wash and body flushing facilities required for immediate emergency use in electric storage battery charging and maintenance areas. Make sure emergency equipment is properly located near these hazards within 10 seconds travel distance.



HANDS-FREE OPERATION

AS 4775 requires that shower valves be of simple operation, turn from off to on in one second or less, and provide hands-free operation once activated. Self-closing valves do not meet this standard and should be replaced.



HAND-HELD BOTTLES

Personal eye wash equipment, such as squeeze / pour bottles do not meet the requirements of plumbed or self-contained eye wash equipment. Make sure units meeting AS 4775 and are within 10 seconds travel time from hazard.



REPLACE INSUFFICIENT EQUIPMENT

Hand-held drench hoses do not meet the criteria of a plumbed or self-contained eye wash. If these are the only means of protection, they should be replaced or supplemented with equipment meeting the requirements of AS 4775.



AUSTRALIAN MANUFACTURER AND DISTRIBUTOR

The Difference is the Experience.

VICTORIA: (03) 9464 4155 | QUEENSLAND: (07) 3889 8844 | NSW: (02) 6040 3888

FREE CALL: 1800 444 022 | FREE FAX: 1800 444 024 | www.pbasafety.com.au